

Quality Control of PurMa™ Lipid-Depleted Bovine and Horse Serums
This Analysis Belong to one of our Previous Lots: 3304102820
(As example)

[For the Lot specific QC please login to the website, and insert the Lot# to the Quality Control Tab](#)



PurMa Biologics, LLC.

A Compony of Solutions!

Product Identity

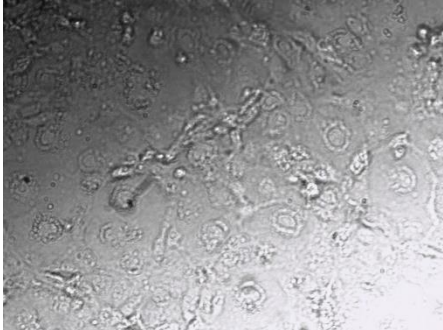
Product Category	Cell and Tissue Culture Reagents
Product Name	PurMa™ Lipid- Depleted Bovine Serums
Catalog Number	P3F014305
Lot Number	30143050032423

The Process of QC:

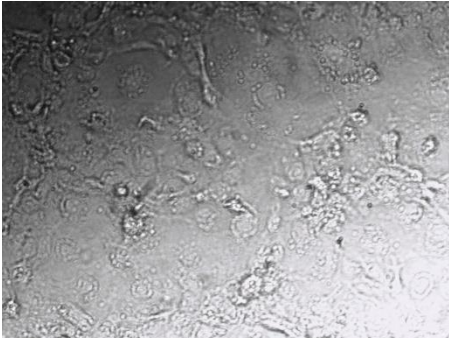
- Three samples of each Lot will be kept and stored at -80 °C, and the following analysis are performed every six months.
- This makes PurMa Biologics the most reliable and trusted company to purchase different types of FBS from.

Triglycerides, Diglycerides, Free Fatty Acids, Phospholipids and Monoglycerides Analysis

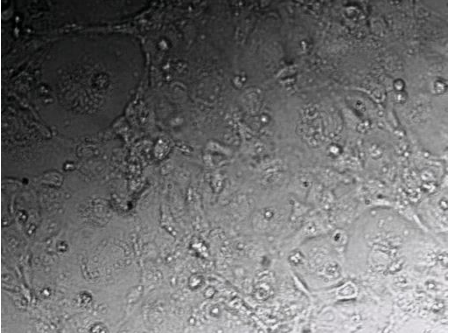
Regular FBS



Dialyzed FBS



Depleted FBS



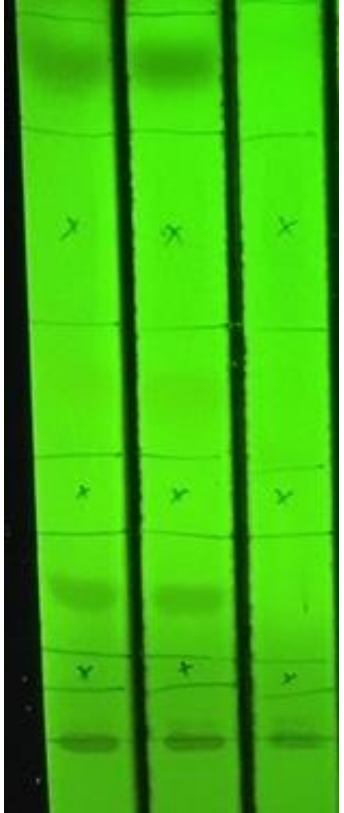
FBS
Dialyzed FBS
Delipidated FBS

Triglycerides

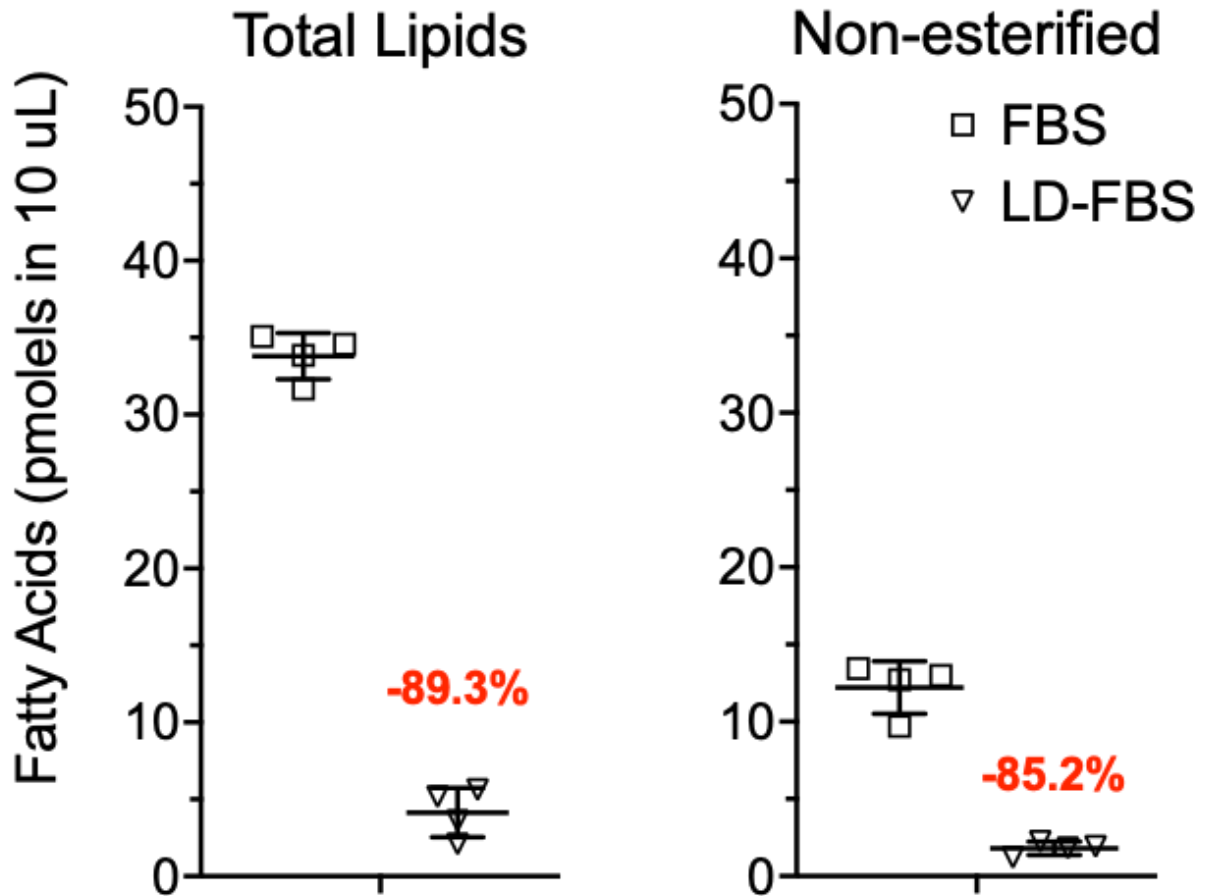
Free Fatty Acids

Diglycerides

Phospholipids and Monoglycerides



Total Lipid and total Fatty Acids as well as non-Esterified fatty acid Analysis



Specifications	After Manufacturing	6 Months Post Manufacturing	12 Months Post Manufacturing	18 Months Post Manufacturing
Appearance and Physiological Properties				
Appearance (Turbidity) For Mold, Yeast and bacteria (Mycoplasma does not cause turbidity)	Light yellow (transparent)	Light yellow (transparent)	Light yellow (transparent)	Light yellow (transparent)
Sterility (Current USP and EP 2.6.1 for Bacteria & Fungi)	Not Detected	Not Detected	Not Detected	Not Detected
PH	7.88	7.66	8.56	7.92
Total Protein (by Chemistry Analyzer)	3.29	3.99	3.96	3.89
Osmolality	Hypertonic-385mOs/kg	Hypertonic-377 mOs/kg	Hypertonic-379 mOs/kg	Hypertonic-383 mOs/kg
Hemoglobin (Fleming & Woolf)	13.20 mg/dl	13.55 mg/dl	13.65 mg/dl	13.80mg/dl
IgG (By Eliza)	0.16 ug/ml	0.15 ug/ml	0.16 ug/ml	0.19 ug/ml
Albumin (By Eliza)	≤ 4.9 g/dl	≤ 4.5 g/dl	≤ 4.9 g/dl	≤ 4.44 g/dl
Electrophoretic Profile				
Alpha 1 & 2	0.72 g/dl	0.7 g/dl	0.73 g/dl	0.77 g/dl
Beta 1 & 2	0.14 g/dl	0.15 g/dl	0.13 g/dl	0.16 g/dl
Gamma1	Not Detected	Not Detected	Not Detected	Not Detected
Hormone Profile				
Cortisol	0.01 µg/dl	0.013 µg/dl	0.008 µg/dl	0.018 µg/dl
Estradiol	26.01 pg/ml	25.99 pg/ml	26.3 pg/ml	26.22 pg/ml
Insulin	3.89 µU/ml	3.89 µU/ml	3.89 µU/ml	3.89 µU/ml
Progesterone	<0.06 ng/ml	<0.06 ng/ml	<0.06 ng/ml	<0.06 ng/ml
T3	101 ng/ml	101 ng/ml	101 ng/ml	101 ng/ml
T4	11.5 µg/dl	11.5 µg/dl	11.5 µg/dl	11.5 µg/dl
Testosterone	<0.01 ng/mL	<0.01 ng/mL	<0.01 ng/mL	<0.01 ng/mL

Specifications	After Manufacturing	6 Months Post Manufacturing	18 Months Post Manufacturing	24 Months Post Manufacturing
Minerals				
Albumin	3.12 g/dl	3.06g/dl	3.23 g/dl	3.18 g/dl
Alkaline Phosphatase	245 U/l	245 U/l	245 U/l	245 U/l
ALT (SGPT)	8 U/l	8 U/l	9 U/l	7 U/l
AST (SGOT)	30 U/l	30 U/l	32 U/l	30 U/l
Bilirubin – Total	0.2 mg/dl	0.2 mg/dl	0.2 mg/dl	0.2 mg/dl
Calcium	12.2 mg/dl	12.63 mg/dl	11.23 mg/dl	12.25 mg/dl
Chloride	98 mEq/l	97 mEq/l	97 mEq/l	96 mEq/l
Cholesterol - Overall	31 mg/dl	31 mg/dl	31 mg/dl	31 mg/dl
Creatinine	1.9 mg/dl	1.8 mg/dl	1.8 mg/dl	1.9 mg/dl
Glucose	105 mg/dl	105 mg/dl	105 mg/dl	105 mg/dl
HDL Cholesterol	0.02 mg/dl	0.005 mg/dl	0.09 mg/dl	0.08 mg/dl
Iron, overall	172 µg/dl	173 µg/dl	172 µg/dl	173 µg/dl
LDL Cholesterol	4 mg/dl	0.02mg/dl	1.23mg/dl	1.33 mg/dl
Phosphorus	12.3 mg/dl	12.3 mg/dl	12.3 mg/dl	12.3 mg/dl
Potassium	>10.0 mEq/l	>10.0 mEq/l	>10.0 mEq/l	>10.0 mEq/l
Sodium	139 mEq/l	139 mEq/l	139 mEq/l	139 mEq/l
Triglycerides	76 mg/dl	74 mg/dl	75 mg/dl	74 mg/dl
Urea Nitrogen	16 mg/dl	15 mg/dl	15 mg/dl	16 mg/dl
Uric Acid	2.9 mg/dl	2.6 mg/dl	2.6 mg/dl	2.8 mg/dl
Endotoxin Control Tests				
Endotoxin Level	<= 1 EU/ml	<= 1 EU/ml	<= 1 EU/ml	<= 1 EU/ml
	<= 1 EU/ml	<= 1 EU/ml	<= 1 EU/ml	<= 1 EU/ml
Viability Analysis				
Cell Culture Testing – MTT (Cell Proliferation Ability)	Pass Lot 3304102820: 1.2X10 ⁶	Pass Lot 3304102820: 1.6X10 ⁶	Pass Lot 3304102820: 1.2X10 ⁶	Pass Lot 3304102820: 1.6X10 ⁶
	Pass Lot 3304102820: 1.8X10 ⁶	Pass Lot 3304102820: 1.6X10 ⁶	Pass Lot 3304102820: 1.8X10 ⁶	Pass Lot 3304102820: 1.6X10 ⁶
Cell Types Used	NSI cell (suspension cells)			
	Cos1 (Adhesive cells)			

Specifications	After Manufacturing	6 Months Post Manufacturing	18 Months Post Manufacturing	24 Months Post Manufacturing
Virus Testing (9 CFR 113.53c)				
Bovine Adenovirus	Not Detected		Not Detected	Not Detected
	Not Detected		Not Detected	Not Detected
Bovine Parvovirus	Not Detected		Not Detected	Not Detected
	Not Detected		Not Detected	Not Detected
Bovine Respiratory Syncytial Virus	Not Detected		Not Detected	Not Detected
	Not Detected		Not Detected	Not Detected
Bovine Viral Diarrhea Virus	Not Detected		Not Detected	Not Detected
	Not Detected		Not Detected	Not Detected
Rabies	Not Detected		Not Detected	Not Detected
	Not Detected		Not Detected	Not Detected
Reovirus	Not Detected		Not Detected	Not Detected
	Not Detected		Not Detected	Not Detected
Cytopathogenic Agents (IBR)	Not Detected		Not Detected	Not Detected
	Not Detected		Not Detected	Not Detected
Hemadsorbing Agents (PI3)	Not Detected		Not Detected	Not Detected
	Not Detected		Not Detected	Not Detected
Bluetongue	Not Detected		Not Detected	Not Detected
	Not Detected		Not Detected	Not Detected